

LV JUICE

RUG UP IN STYLE



ATPV 4.2cal/cm² Arc Rated Merino Base Layers - **Available Now**

These superior quality garments are designed for the workplace and offer ultimate comfort and durability. Merino wool provides natural warmth, breathability, and temperature regulation, and is blended with FR treated Viscose.

Features

- High quality 50% Merino Wool / 50% FR treated Viscose fabric sewn with FR thread
- ATPV 4.2cal/cm² Arc Rating
- Size options from s-3XL
- Durable material
- HRC1 labels are sewn into each garment
- Machine washable & quick drying



Compliance & Standards

- AS/NZS 1906.4:2010
- ASTM F1506-18



VIEW THE RANGE



This Month

- 25 YR WARRANTY ON THESE LV INSULATORS PAGE 3
- MAHA-PLUS LED HIGH MAST LIGHTING PAGE 4
- NEW NVENT CADDY CABLE SOLUTIONS PAGE 6

FREE **HOMEMADE CARMEL BITES**
WHILE STOCKS LAST



When you spend over \$400 (+GST) on one invoice this month



www.transnet.co.nz



Got time to waste on Mains Entry? Yeah, nah.

TRANSNET MAINS ENTRY BOX

*The faster, safer, easier-to-install
Mains Entry Box*



SECURE SCREW

Captive Stainless Steel cover screw



SAVE TIME

Make off connectors outside enclosure



SHEAR BOLT CONNECTIONS

Perfect connection every time



UV STABLE PLASTIC

Won't shatter

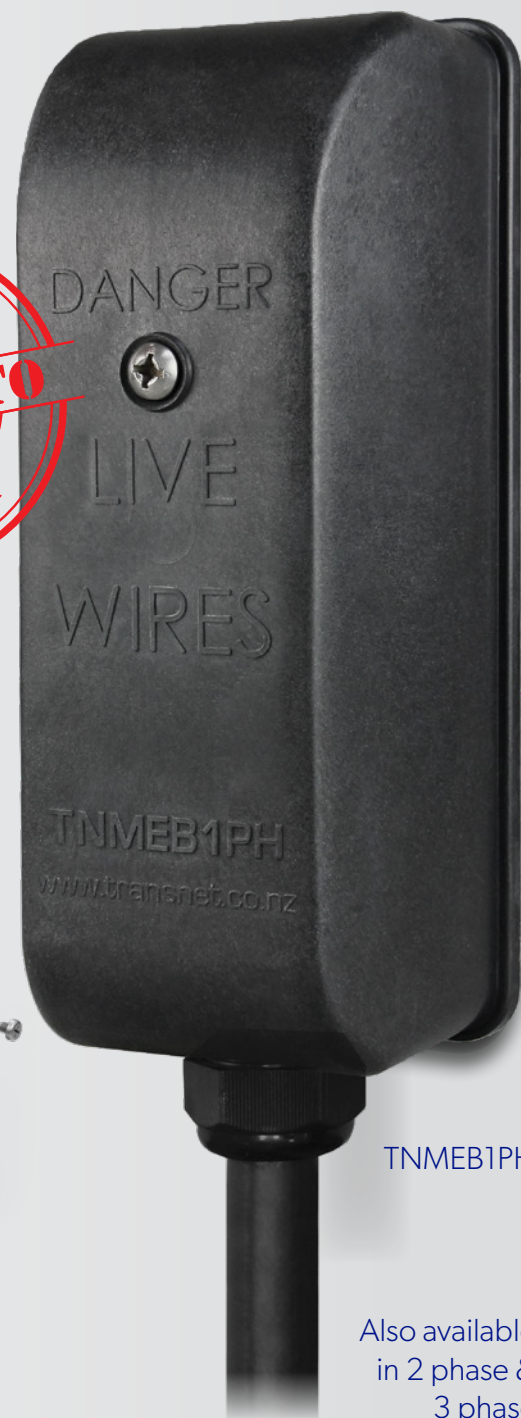


SAFER TO INSTALL

No bare live parts



**MADE IN NEW
ZEALAND**



TNMEB1PH

Also available
in 2 phase &
3 phase

FEATURES

- Main cable supported by gland in gland plate
- Gland plate perfect fit for conduit gland too
- Strip length clearly outlined on connector body
- Electrical test points and test point caps built into connector bolt for ease of testing
- Insulated bimetallic connectors will terminate AL/CU cables, 4mm²-35mm² range



TRANSNET MONTHLY GIVEAWAY SUPPORTING KIWI BUSINESSES

Need a sweet treat to get you through the cold days of winter? Yeah, us too, so for our next locally made giveaway we've chosen a delicious piece of home baking from Mummy's Yummys. The company grew out of good old-fashioned baking in the family

kitchen, and it shows in the quality of their homemade Little Caramel Bites which we're sending out to customers this month. Indulge in a rich, gooey slice, with a brownie base combined with coconut layered with

www.mummysyummys.co.nz/

gooey caramel and finished with a layer of chocolate. You won't be able to just stop at one!

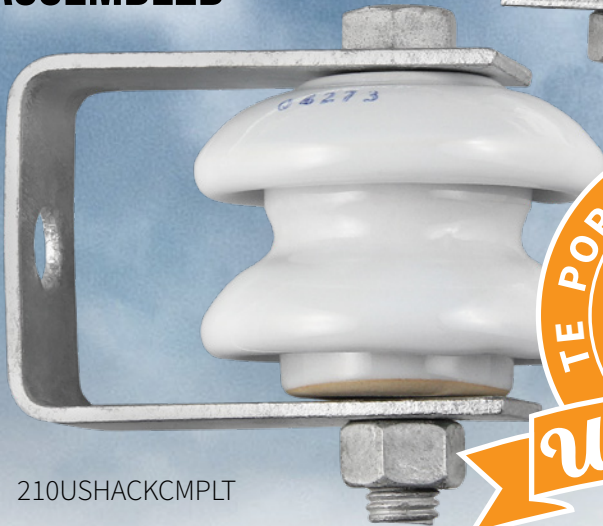




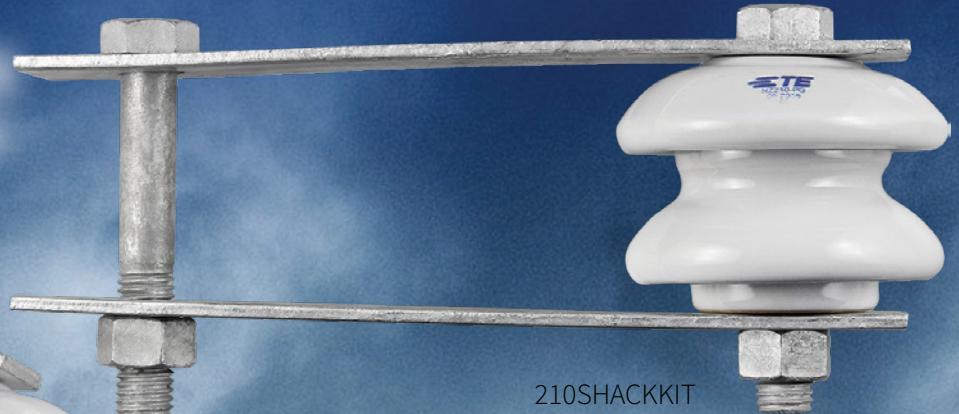
LV SHACKLE INSULATOR KITS

AVAILABLE **EX STOCK** FOR
IMMEDIATE AVAILABILITY

SUPPLIED FULLY
ASSEMBLED



210USHACKCMPLT



210SHACKKIT



QUALITY TE CONNECTIVITY
PRODUCT USED IN NZ FOR
MORE THAN 20 YEARS

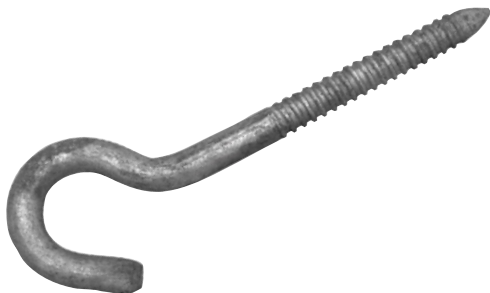
25 YEAR PORCELAIN
WARRANTY

Cat No.	Shackle Type	Description
210SHACKKIT	STRAP	210 LV SHACKLE INSULATOR KIT INCLUDES BOLTS & STRAPS
210USHACKCMPLT	U SHACKLE	210 LV SHACKLE INSULATOR KIT INCLUDES BOLTS & U-SHACKLE
205SHACKKIT	STRAP	205 LV SHACKLE INSULATOR KIT INCLUDES BOLTS & STRAPS
205USHACKCMPLT	U SHACKLE	205 LV SHACKLE INSULATOR KIT INCLUDES BOLTS & U-SHACKLE



AUTHORISED DISTRIBUTOR

ESSENTIAL EQUIPMENT HOUSE HOOK

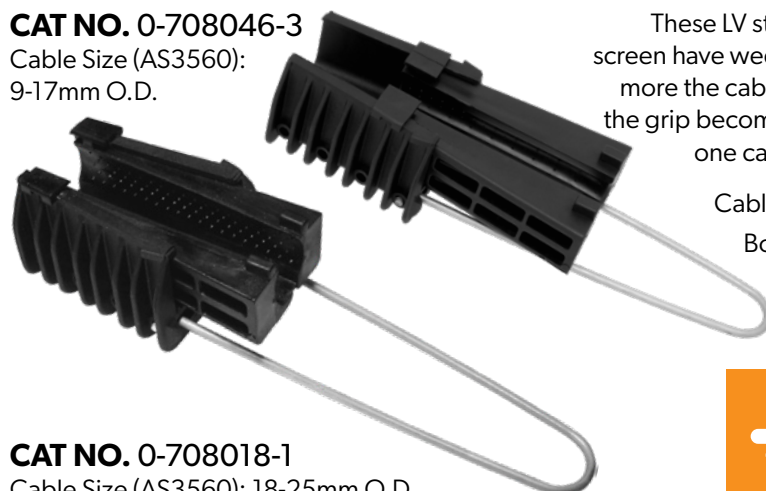


Galvanised Steel threaded hook, used as an anchor point for securing LV shackle insulators. Simple to install and remove. 175X12mm C/W, 25mm diameter hook I.D.

CAT NO. HOUSEHOOK

CAT NO. 0-708046-3

Cable Size (AS3560):
9-17mm O.D.



CAT NO. 0-708018-1

Cable Size (AS3560): 18-25mm O.D.

TE CONNECTIVITY STRAIN CLAMPS

These LV strain clamps for neutral screen have wedge technology so the more the cable is pulled, the tighter the grip becomes. These clamps grip one cable from 9-25mm OD.

Cable Type: Neutral screen
Body: Glass Filled Nylon
Straps: Stainless Steel



AUTHORISED DISTRIBUTOR



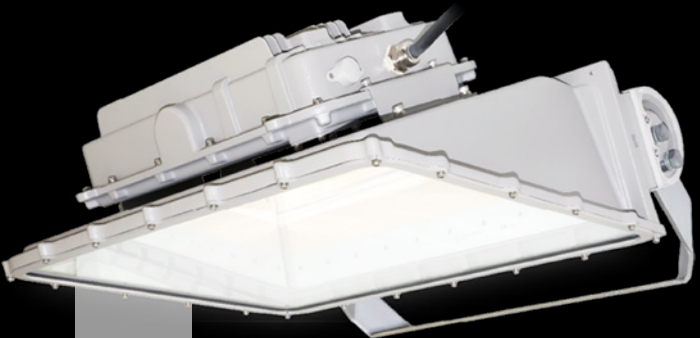
HIGH MAST LIGHTING

THE MAHA RANGE OFFERS:

- Outstanding asymmetric reflector optics, full cut-off, glare-free, minimum light pollution
- No need of visor, worry-free in visor corrosion or cleaning, less wind & structural load
- High efficacy, maximum energy saving, excellent cooling technology & durability
- 20kV built-in surge protector
- Flexible options with remote or integrated driver (wireless or DMX, NEMA 7, DALI, Cloud control)
- Marine Grade tested
- Superior lifespan (L90 – 70K hrs)
- Options on mounting brackets



SPORTING FACILITIES AND ALL HIGH MAST APPLICATIONS



600W LEDMAHA-PLUS

TECHNICAL SPECIFICATIONS

CAT NO.	LEDMAHA-PLUS-600
POWER	600W
LUMINOUS EFFICACY	150lm/W
LUMINOUS FLUX	90,000lm
COLOUR TEMPERATURE	5000K (3000K, 4000K, & 5700K also available)
CRI	80 Ra
WEIGHT	20.0kg
INPUT VOLTAGE	220 ~ 240 Vac / 200 ~ 277 Vac / 347 ~ 480 Vac
OPERATING TEMPERATURE	-30°C to 55°C



1000W LEDMAHA-PLUS

TECHNICAL SPECIFICATIONS

CAT NO.	LEDMAHA-PLUS-1000
POWER	1000W
LUMINOUS EFFICACY	140lm/W
LUMINOUS FLUX	140,000lm
COLOUR TEMPERATURE	5000K (3000K, 4000K, & 5700K also available)
CRI	70 Ra (80 Ra available)
WEIGHT	Remote = 15.2kg Built-In = 28.2kg
INPUT VOLTAGE	220 ~ 240 Vac / 200 ~ 277 Vac / 347 ~ 480 Vac
OPERATING TEMPERATURE	-30°C to 55°C

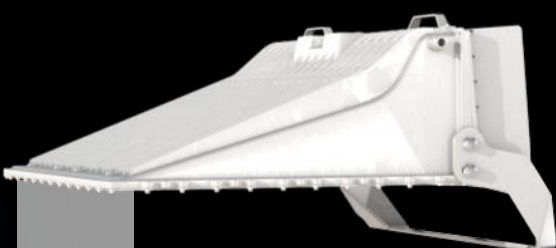


OLD: HID 1.5KW

High Glare
Spill Light
Class III
Bad Uniformity

NEW: LED 600W

Reduced Glare
Controlled Light
Class II
Great Uniformity



1600W LEDMAHA-PLUS

TECHNICAL SPECIFICATIONS

CAT NO.	LEDMAHA-PLUS-1600
POWER	Max 1600W (1400W optional as MAH1K4)
LUMINOUS EFFICACY	130lm/W
LUMINOUS FLUX	208,000lm
COLOUR TEMPERATURE	5000K (3000K, 4000K, & 5700K also available)
CRI	70 Ra (80 Ra available)
WEIGHT	LED Module = 22.5kg With Driver = 38.0kg
INPUT VOLTAGE	220 ~ 240 Vac (347 ~ 480 Vac optional)
OPERATING TEMPERATURE	-30°C to 55°C





MORE NVENT CADDY CABLE SOLUTIONS



ROD LOCK CHANNEL NUT

This channel nut is a simple solution for multi-tiered trapeze installations or wall mount strut applications, and has been designed for open-side-up or open-side-down strut configurations.

**NEW
PRODUCT**



FEATURES

Reduces installation time up to **34%**

Load capacity up to 750lb (3/8" rod) or 2750N (M8, M10 rod)

Works with slightly damaged threads and minor burrs on the threaded rod

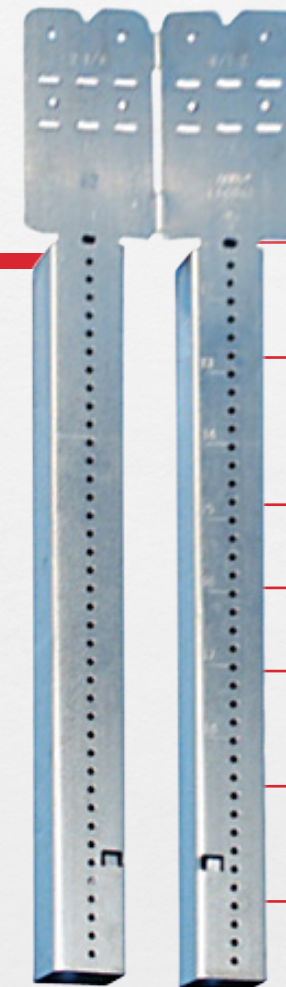
Provides fast universal attachment of threaded rod and hardware to standard strut profiles

Can be used to prefabricate assemblies which can be quickly pushed onto previously installed threaded rods

Works with slightly damaged threads and minor burrs on the threaded rod

TELESCOPING BOX BRACKET

**SEE THE
TELESCOPING
BOX BRACKET
IN ACTION**



FEATURES

Easy to mount **multiple** boxes

Notched and marked for easy identification and bending

Improved design with stamped inch markings and pilot holes accelerates precise box conduit mounting between studs

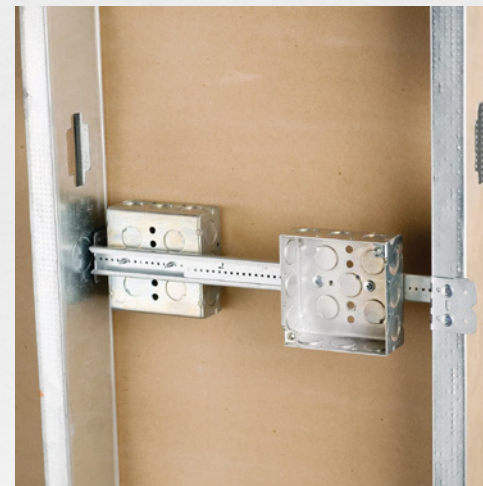
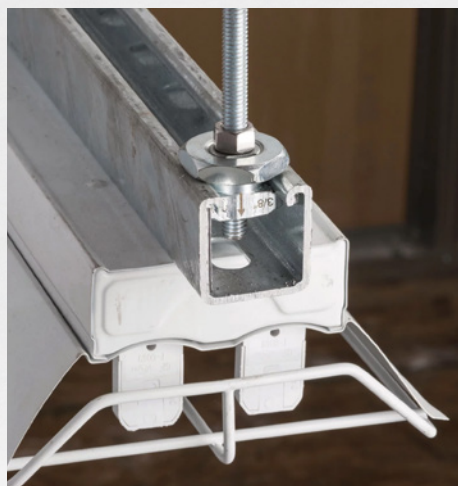
Requires only a screw gun to install

Can be mounted to face or inside of stud

Adjustable for non-standard stud spacing

Interlocking tab prevents accidental disassembly

Unique, one-piece, break apart design



THE CHOICE IS YOURS

Fully Customisable Alu Cabinets



Auckland

78 Cryers Road
East Tamaki
Auckland
NEW ZEALAND
Ph 0800 442 182
PO Box 39 383
Howick, Auckland

Wellington

10 Petone Ave
Petone
Wellington
NEW ZEALAND
Ph 04 576 2530
PO Box 39 383
Howick, Auckland
NEW ZEALAND
sales@transnet.co.nz

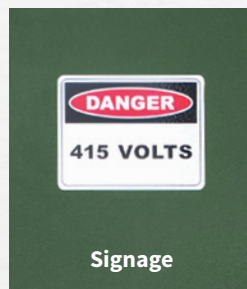
TransNet Tonga

Nuku'alofa

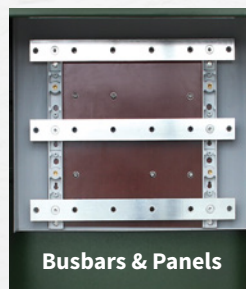
Lakalakaimonu Multi Utility
Complex
Taufa'ahau Road
Poutaha
Nuku'alofa
TONGA
Ph +67 627 939
PO Box 2932
Nuku'alofa
TONGA
transnet@kalianet.to

FEATURES

- Made from 2.5mm marine grade alloy powder coated with a rippled industry standard green coating
- Hinged door earthed to main cabinet makes for easy access to authorised persons
- Can be installed freestanding or recessed into walls/fences
- Removable lower front sill allows for easy access to cable installation area
- Hot dip galvanised underground base



Signage



Busbars & Panels



Locks & Security



Switchgear

CUSTOMISATIONS

- Custom sizes available (on request, some conditions may apply)
- Locking mechanism of your choice can be included
- Additional security options also available
- Custom branding including safety warning labels, Network asset numbers and identification labels can be installed prior to delivery
- Available standard as empty cabinets (as outlined), any inclusions must be confirmed at time of order

NOTE: Images show different variations of component inclusions and are not intended as realistic examples of the exact product supplied. All cabinets are populated to customers specific requirements at time of order. Contact our customer service team for more information.



TransNet NZ Ltd has made every reasonable effort to ensure the accuracy of this information and it is to the best of our knowledge correct and reliable. Under no circumstances does this constitute an assurance of any particular quality or performance and users should independently evaluate the suitability of products for their desired application. All information in this publication including pricing, drawings, illustrations, images and graphic designs are reflections of our current understanding. TransNet NZ Ltd reserves the right to make any adjustment to this information at any time. Our liability for the products outlined in this publication is set forth in our standard terms and conditions of trade. In case of any potential ambiguities or questions, please contact us for clarification.

